



MPPT Solar Charge Controller

Tracer A series



Tracer A series adopts common positive design and advanced MPPT control algorithm. The products can track the MPP point fast and accurately in any situation which will improve energy efficiency and obtain the maximum solar energy.



Models :

- Tracer1210A 10A, 12/24V auto work
- Tracer2210A 20A, 12/24V auto work
- Tracer3210A 30A, 12/24V auto work
- Tracer4210A 40A, 12/24V auto work

Features :

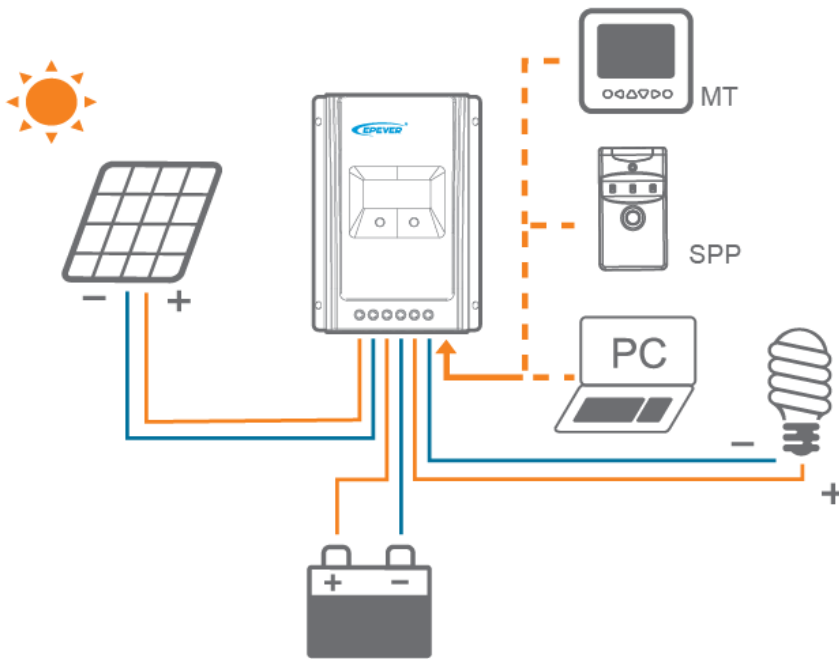
- Advanced MPPT technology
- High tracking efficiency no less than 99.5%
- Peak conversion efficiency of 98%
- Ultra-fast tracking speed
- Accurately recognizing and tracking of multiple power point
- Multi-function LCD displays system information intuitively
- User programmable for battery types, load control etc.
- 3-Stage charge with PWM output
- Common positive grounding design
- RS485 port with industrial standard MODBUS open architecture
- Fully programmable function via PC software or remote meter

Electronic protections:

- PV reverse polarity protection
- PV over current alarm protection
- Battery over discharge protection
- Load short circuit protection
- Overheating protection
- PV short circuit protection
- Battery overcharge protection
- Battery reverse polarity protection
- Load overload protection

Load Set:

- Manual Control (ON/OFF)
- Light ON + Timer
- Light ON/OFF (Default)
- Time Control



Setting Operation:

There are two methods that can modify load mode and control parameter through infrared interface:

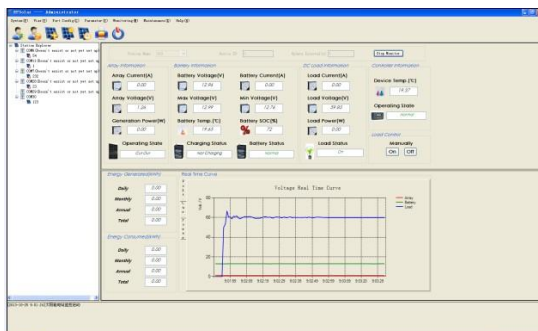
1. Remote meter, MT50
2. Super Parameter Programmer, SPP-02
This method can realize one-key setting operation which is suitable for bulk quantity products setting or applied in the projects.
3. PC monitoring setting software “Solar Station Monitor”



Optional accessories :

| | | | |
|------------------------------|--|---|--|
| | | | |
| <p>Remote meter MT50</p> | <p>Remote temperature sensor RTS300R47K3.81A</p> | <p>PC communication cable CC-USB-RS485-150U</p> | <p>Super parameter programmer SPP-02</p> |

PC software:



Technical Specifications:

| Model | Tracer1210A | Tracer2210A | Tracer3210A | Tracer4210A |
|--------------------------------------|---|--------------------------|--------------------------|--------------------------|
| Nominal system voltage | 12/24VDC auto work | | | |
| Rated charge current | 10A | 20A | 30A | 40A |
| Rated discharge current | 10A | 20A | 30A | 40A |
| Battery input voltage range | 8~32V | | | |
| Max. PV open circuit voltage | 100V(at minimum operating environment temperature) 92V(at 25 °C environment temperature) | | | |
| MPP voltage range | $V_{BAT}+2V \sim 72V$ | | | |
| Max. PV input power | 130W(12V) 260W(24V) | 260W(12V) 520W(24V) | 390W(12V) 780W(24V) | 520W(12V) 1040W(24V) |
| Equalize charging voltage | Sealed: 14.6V, Flooded: 14.8V | | | |
| Boost charging voltage | Gel: 14.2V, Sealed: 14.6V, Flooded: 14.8V | | | |
| Float charging voltage | 13.8V | | | |
| Low voltage reconnect voltage | 12.6V | | | |
| Low voltage disconnect voltage | 11.1V | | | |
| Self-consumption | $\leq 20mA/12V; \leq 16mA/24V$ | | | |
| Temperature compensation coefficient | $-3mV/^\circ C/2V(25^\circ C)$ | | | |
| Working temperature | $-25^\circ C \sim +45^\circ C$ | | | |
| Enclosure | IP30 | | | |
| Overall dimension | 172x139x44mm | 220x154x52mm | 228x164x55mm | 252x180x63mm |
| Power terminals | 12AWG(4mm ²) | 6AWG(16mm ²) | 6AWG(16mm ²) | 6AWG(16mm ²) |
| Net weight | 0.6kg | 1.1kg | 1.2kg | 1.9kg |



BEIJING EPSOLAR TECHNOLOGY CO.,LTD.
 Add: BLDG #18, CO.PARK ,NO.8 HEYING
 ROAD,CHANGPING DISTRICT,BEIJING,CHINA
 Tel: 010-82894962 / 82894112
 Fax: 010-82894882
 E-mail: info@epsolarpv.com